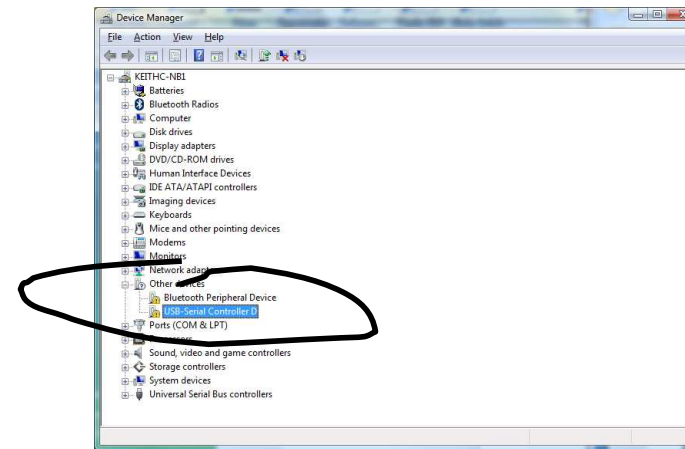


## Aten USB to Serial driver install for Vista

When the computer is running, Insert the USB adaptor, you will see this screen.

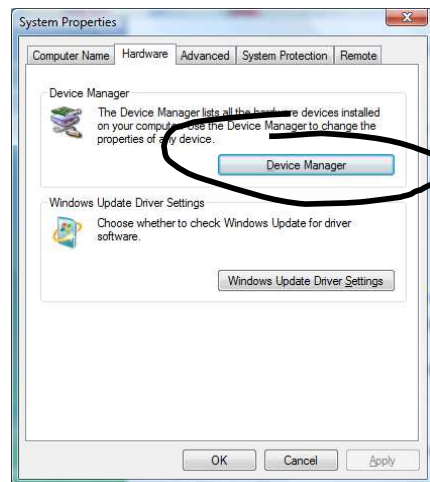
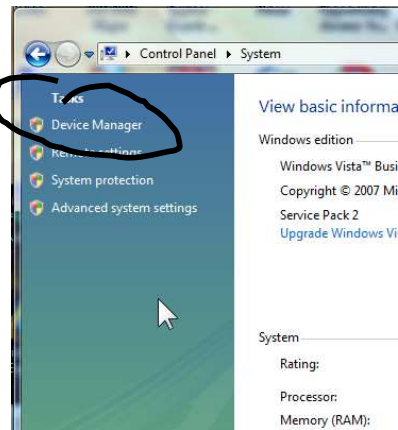


Click "Ask me again later"

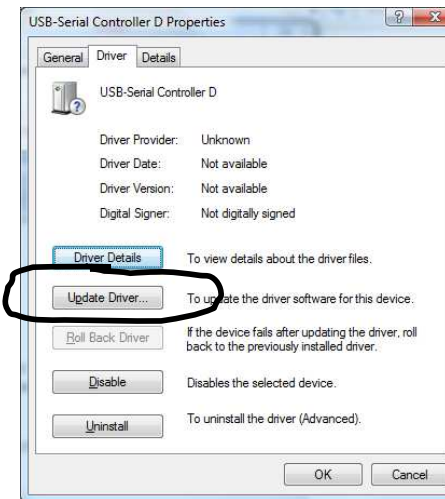


Double click on "USB-Serial Controller"

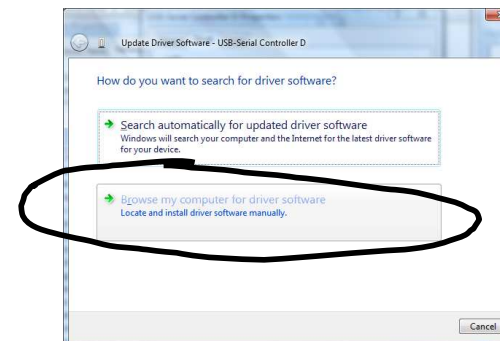
Go into Control Panel > System > Device Manager



Click Device manager.

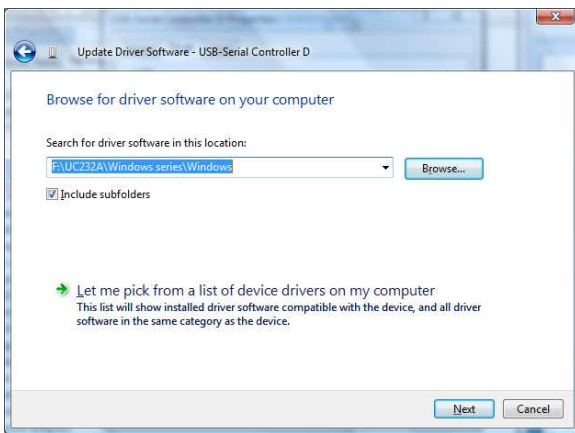


Click on "Update Driver"

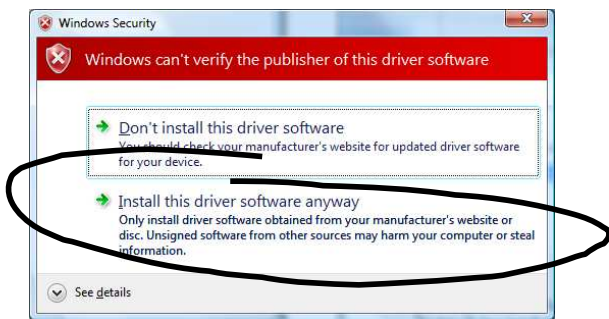


software"

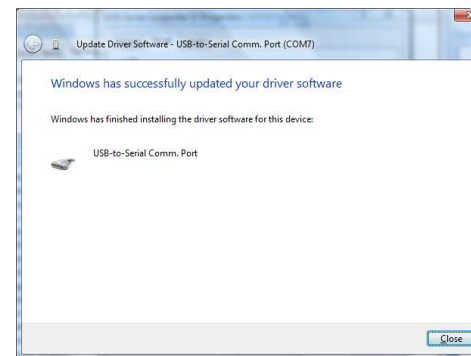
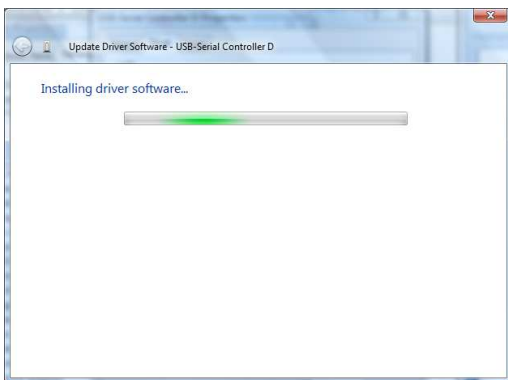
Click on "Browse my computer for the driver



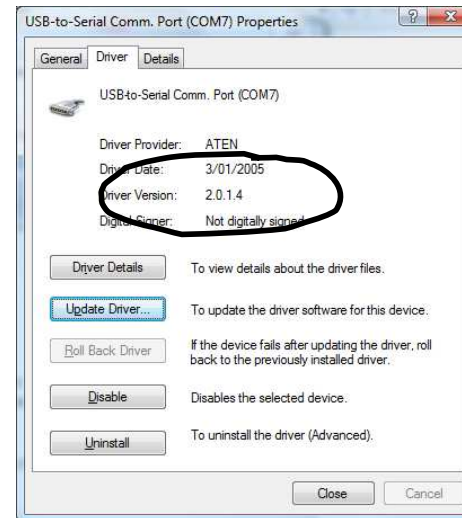
If your cdrom drive is D: it will show "D:\UC232A\Windows series\Windows", Click Next



Click on "Install this software anyway"

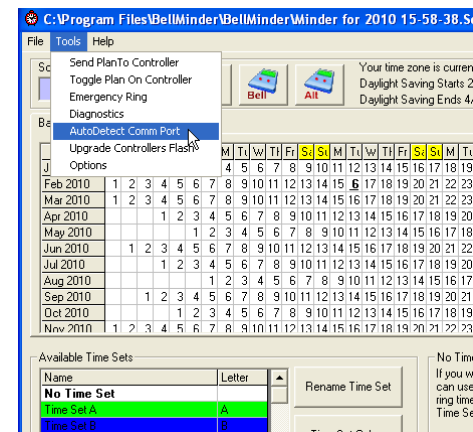


Click Close.



Click the Driver version, it should be 2.0.1.4

Then on the BellMinder software use the Tools> AutoDetect Comm Port. Then click "Start Detection"



Done