

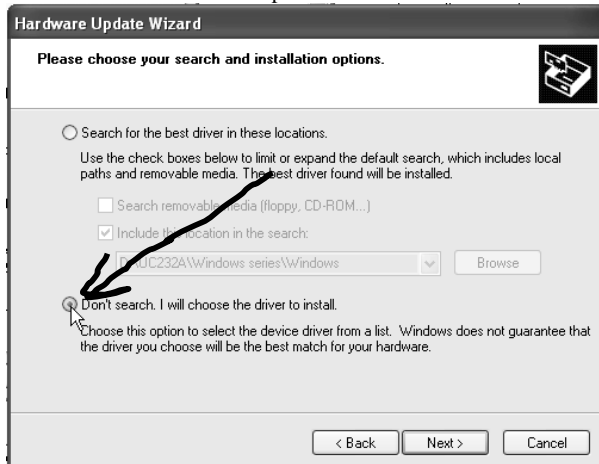
# ATEN USB-Serial Adaptor installation for Windows XP

These instructions are for PC savvy or IT Professionals.

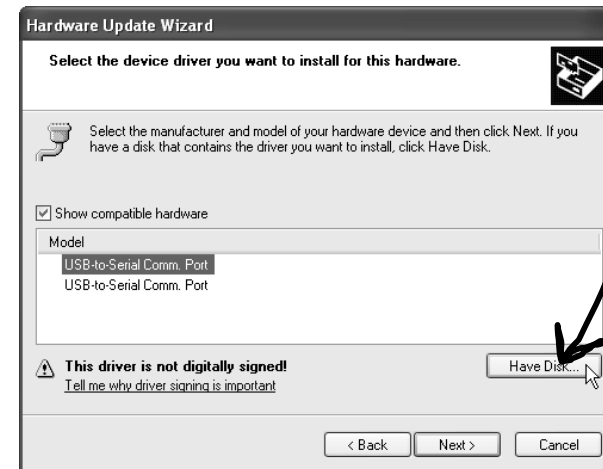
Insert the USB cable into the computer.  
This screen below will appear.



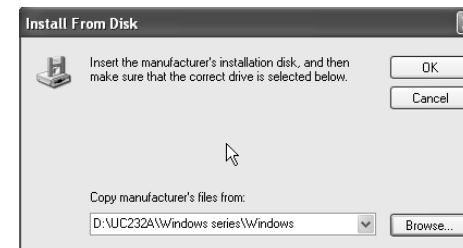
Select "Install from a list or specific location" click Next



Click on "Don't Search. I will choose the driver to install". Click Next



Choose the "USB-to-Serial Comm. Port", then click on "Have Disk"

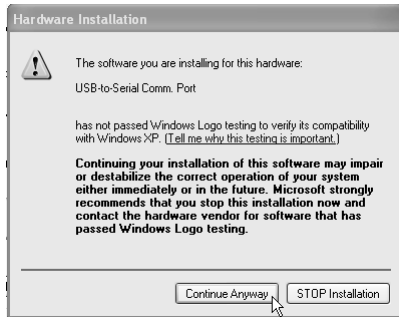


Either browse to where the drivers are, or type the above in. Click ok.

You will return to this screen.

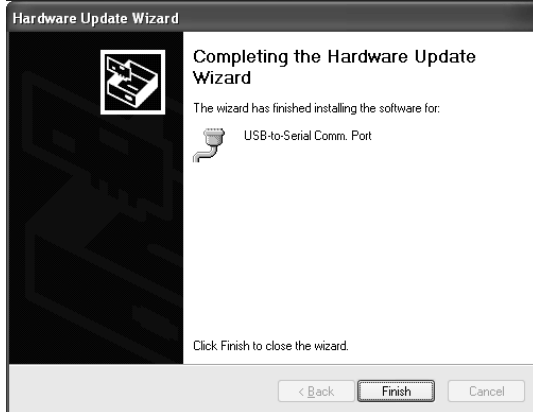
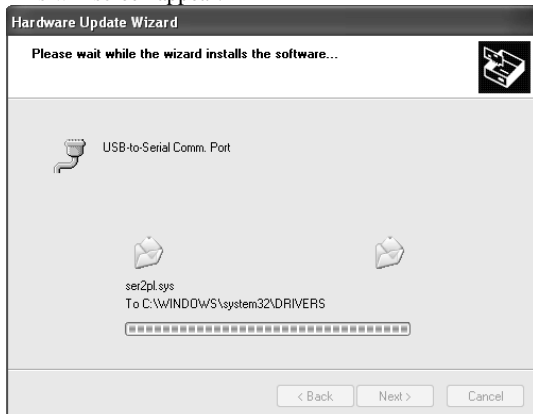


Click Next



Click on "Continue Anyway"

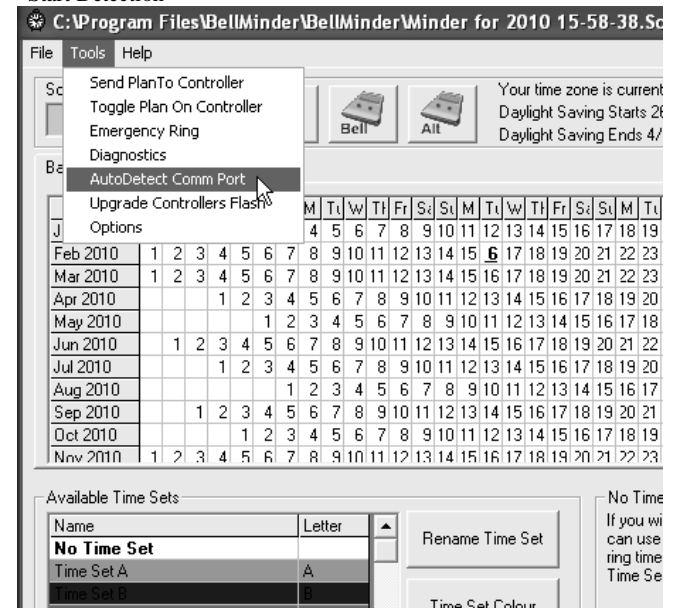
This will screen appear.



Click Finished

REBOOT YOUR COMPUTER

Then on the BellMinder software use the Tools> AutoDetect Comm Port. Then click "Start Detection"



Done